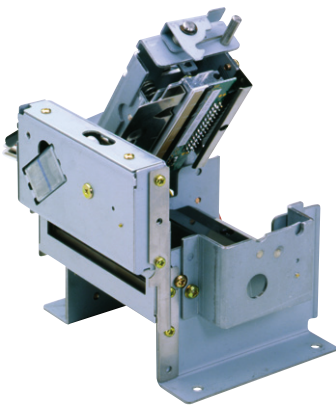


# ATP- 60+ / ATP- 80+

High-Performance Thermal Printer for Multiful Application.



## Feature

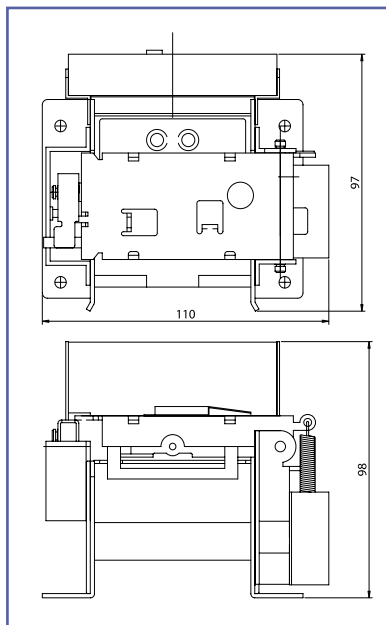
- ▶ Easy paper loading clamshell design
- ▶ Horizontal or vertical mounting

## Application

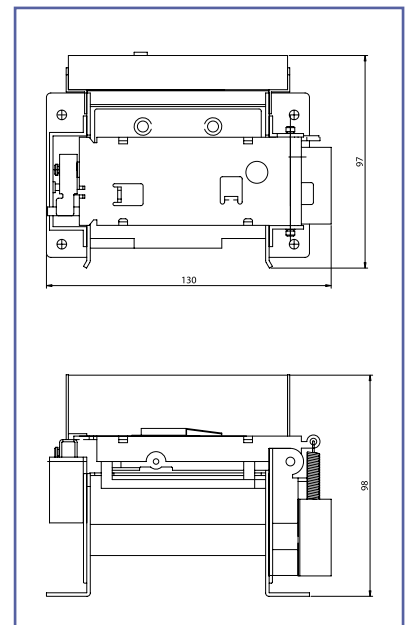
- ▶ Ticket terminals
- ▶ Information / Internet kiosk
- ▶ Vending machines
- ▶ Automated teller machines(ATMs)
- ▶ Gambling and lottery machines
- ▶ Analyzers
- ▶ Receipt printer

Specification	ATP- 60+	ATP- 80+
Printing System	Horizontal Direct Thermal	Horizontal Direct Thermal
Resolution	8dots/mm	8dots/mm
Print Width	56mm(448dots)	72mm(576dots)
Paper Feeding Method	Friction Feeding	Friction Feeding
Print Speed	100mm/sec(Max.)	100mm/sec(Max.)
Drive Voltage	Motor/Head 24V ±5%, Logic 5V ±5%, Sensor 5V ±5%	Motor/Head 24V ±5%, Logic 5V ±5%, Sensor 5V ±5%
Number of column	28columns(16x24), 37columns(12x24)	36columns(16x24), 48columns(12x24)
Head Up Detector	Mechanical switch	Mechanical switch
Head Life	50km	50km
Cutting System	Guillotine style	Guillotine style
Cutting Width	63mm	86mm
Cutter Life	300,000 cuts	300,000 cuts
Weight	Approx. 430g	Approx. 600g
Dimensions(mm)	110(W) x 97(L) x 98(H)	130(W) x 97(L) x 98(H)
Option	Controller(RS-232C/ Parallel), AC Power, AC Adaptor	

Design, Specifications are subject to change without notice. Ask factory for technical specifications before purchase and/or use. Whenever a doubt arises form this products, please inform us immediately for technical consultation without fail.



ATP-60+



ATP-80+